

# THE EASE OF MOBILE X-RAY TECHNOLOGY



**KE-Meditec Consulting GmbH**

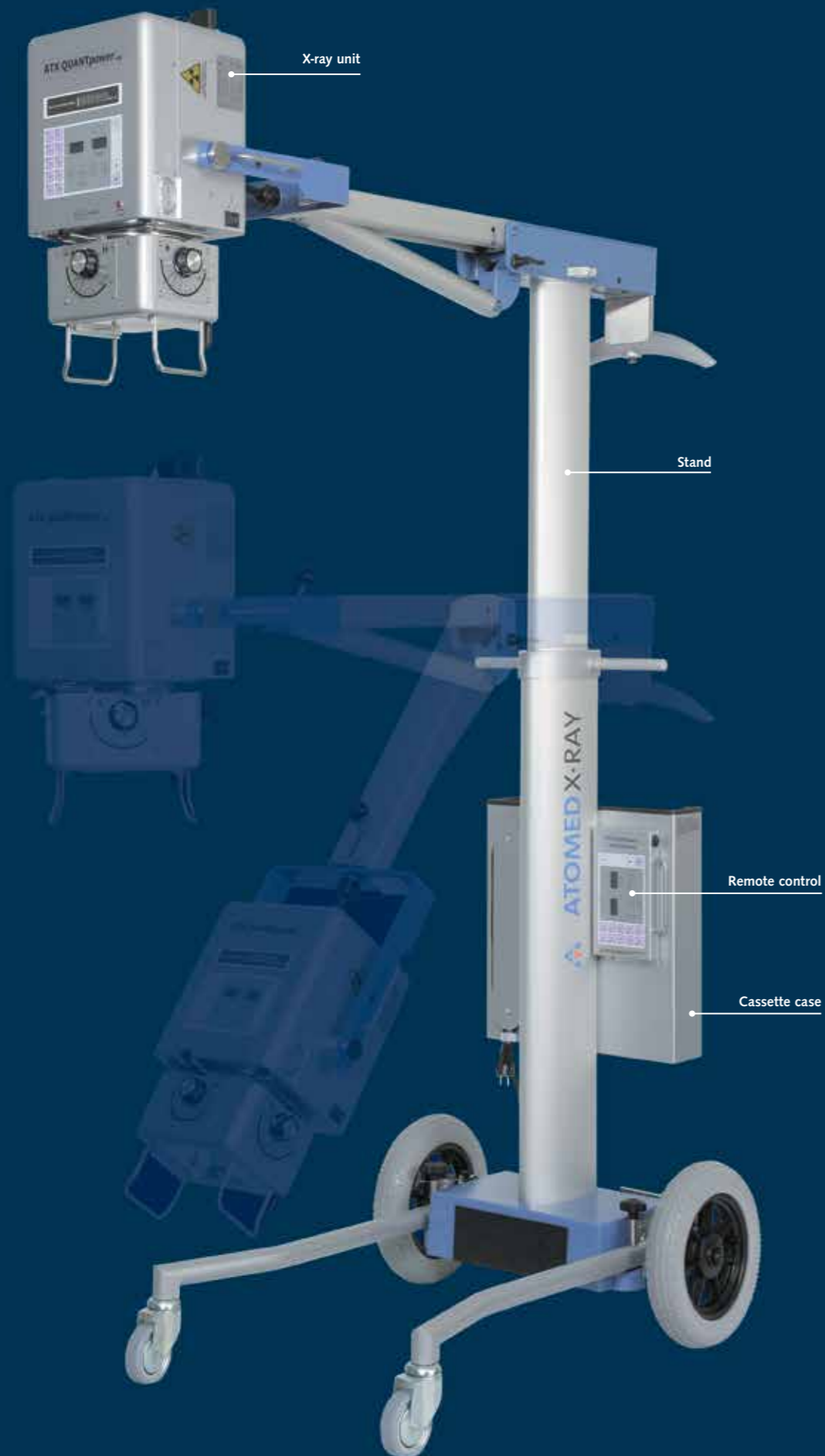


## THE EASE OF MOBILE X-RAY TECHNOLOGY

The feather belongs to nature's most brilliant solutions. It sustains and yields warmth, providing an elegant design. Close to nothing else, it resembles high performance functionality and extreme lightweight.

### **The feather became our paradigm.**

An X-ray technology was put together combining minimum weight and maximum performance, packaged in superior design.



## THE EASE OF MOBILE X-RAY TECHNOLOGY

We are proud to present the ATX QUANTpower and the ATX DR Mobile Case as mobile X-ray technology for the diagnosis of human beings.



ATX QUANTpower and ATX DR Mobile Case are a compact, light and highly efficient combination which may be used to carry out a complete X-ray diagnosis no matter where you are.

Wherever there is a need for a mobile X-ray system – the ATX QUANTpower in combination with the ATX DR Mobile Case is the ultimate solution.

### Lightweight

The ATX QUANTpower only weights 75 kg. In comparison to any other device with the same efficiency, this is a huge step towards minimizing the weight.

### Brilliant

X-ray images taken with the combination of ATX QUANTpower and ATX DR Mobile Case allow extreme magnification and they are characterized by excellent sharpness and image quality.

### Mobile

The combination of ATX QUANTpower and ATX DR Mobile Case come packed in a carrying case, so it can be taken anywhere. Also we present our unique X-ray-Vehicle.

### Digital

Digital X-ray images may be sent via UMTS, WLAN or satellite transmission to any other physician or specialist. Therefore, diagnosis and help is only mouse clicks and seconds away.

# Lightweight

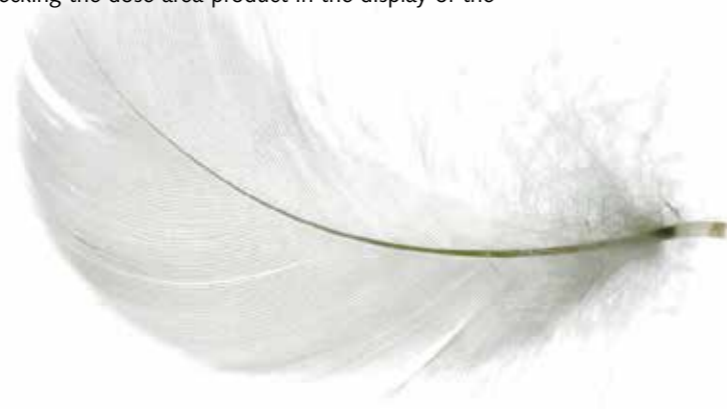
## An easy decision



The ATX QUANTpower can easily be brought to the patient. Doorsteps and stairs are no problem for the mobile X-ray system and even one single person can handle the whole equipment easily.

The ATX QUANTpower runs with normal 220 V DC, it can be plugged it into any household electricity socket, done! All functions of the system may be chosen via the easy and clear display as well as the remote control. The memory buttons of the system guarantee a quick and easy operation of the system, after having stored the correct kV and mAs values.

The up to date high frequency generator offers an extreme efficiency rate. Shortest exposure times guarantee a very low radiation for humans. Radiation can be controlled immediately after the use of the system by checking the dose area product in the display of the generator.



The ease of operation complements the light weight of the equipment. The display has a clear layout and is simple to handle.



Memory function keys

Rotatable collimator with integrated DAP measurement chamber and a scale for FFA

Retainers for safety clearance

DAP display  
Dose Area Product

Control panel

# Mobile

## A high-performance companion



It takes only a few simple steps and not much physical effort to assemble the ATX QUANTpower plus DR Mobile Case. Extra transportation and lifting technology is not required.

Both systems are packed in specially designed carry boxes or cases, which protect the equipment against any influences from outside. Integrated pressure valves allow even the transport by airplane.

So, the mobile X-ray system ATX QUANTpower plus ATX DR Mobile Case is the ideal solution for the deployment of scientific expeditions, medical corps, outdoor operations or in civil protection.



The mobile X-ray system ATX QUANTpower plus ATX DR Mobile Case is the ideal solution for the deployment of scientific expeditions, outdoor operations or in civil protection.



# Mobile

## Powerful radiology in motion



Our X-ray-Vehicle is worldwide unique in the combination of lightweight and radiological potential. The mobile X-ray vehicle offers the identical service to a stationary radiological unit.

The equipment includes:

- Generator
- Thorax Stand
- Detector
- X-ray table

The X-ray images are evaluated using the latest processing and analysis software. Image data and other information can be securely exchanged with a stationary clinic via satellite, UMTS or mobile phone.



In the case of X-ray Vehicle we worked together with world-famous and certificated car-specialists.

# Brilliant

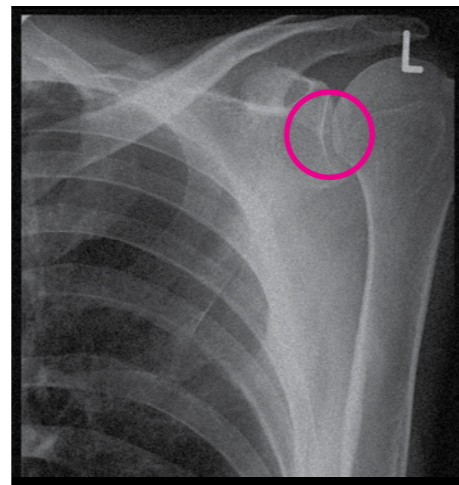
## Impressive image definition



**X-ray diagnosis with the ATX QUANTpower and the DR Mobile Case – the ultimate solution with sharp and clear pictures in no timer, wherever you want.**

The mobile silica detector guarantees highest functionality and efficiency even under extreme conditions. User friendly software is provided for image analysis and image processing. The software has been tried and tested in hundreds of applications ranging from orthopedics and surgery to all fields of veterinary medicine. Due to its modular approach the software can be tailored to all customer needs. It works reliably in single workstation - or networked setups and can be integrated into any medical office management system.

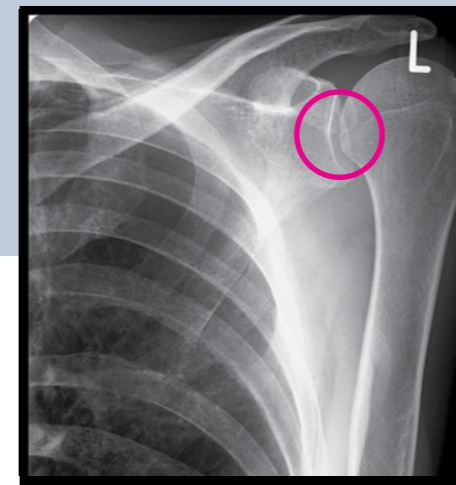
The image resolution of classic X-ray film has its limits in the granularity of the chemical substrate. Magnification of important details is barely feasible, more than often resulting in rerecording the image.



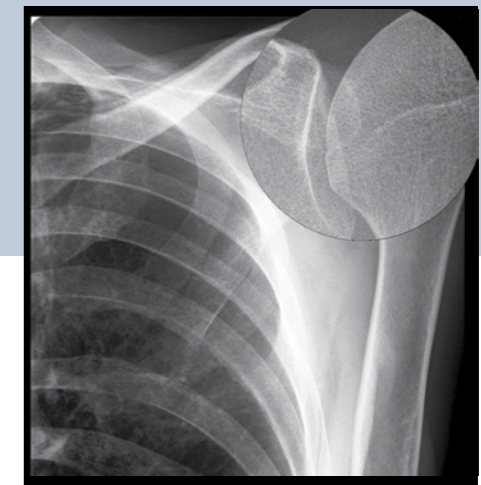
Conventional X-ray image on film

**Make use of the advantages of the digital X-ray technology:**

- Lightweight
- Brilliant
- Mobile
- Digital



The same image digitally recorded by the ATX QUANTpower plus ATX DR Mobile Case



Enlarged detail

# Digital

## Aid at the speed of light



**Digital X-ray images taken with the ATX QUANTpower and ATX DR Mobile Case may be sent via UMTS, WLAN or satellite transmission, therefore expert diagnosis and help is only mouse clicks and seconds away.**

Whether in the desert or in the Antarctic ice fields, in peace keeping missions or catastrophe areas – the ATX QUANTpower and the ATX DR Mobile Case produce X-ray images of highest quality. Diagnosis and help is then only mouse clicks and seconds away.

A life-saving speed of light connection. The combination of ATX QUANTpower and ATX DR Mobile Case guarantee life saving diagnosis away from hospitals or even civilization – diagnosis to make a choice whether transportation of a patient into a hospital will be required and which measures will have to be taken – this saves time when seconds count.

The equipment consists of X-ray unit, detector, image acquisition and processing unit plus an image data communication interface. A table is integrated into the ATX DR Mobile Case. If you don't need the table, simply unplug the module. This way the system loses even more weight.

ATX DR Mobile Case closed

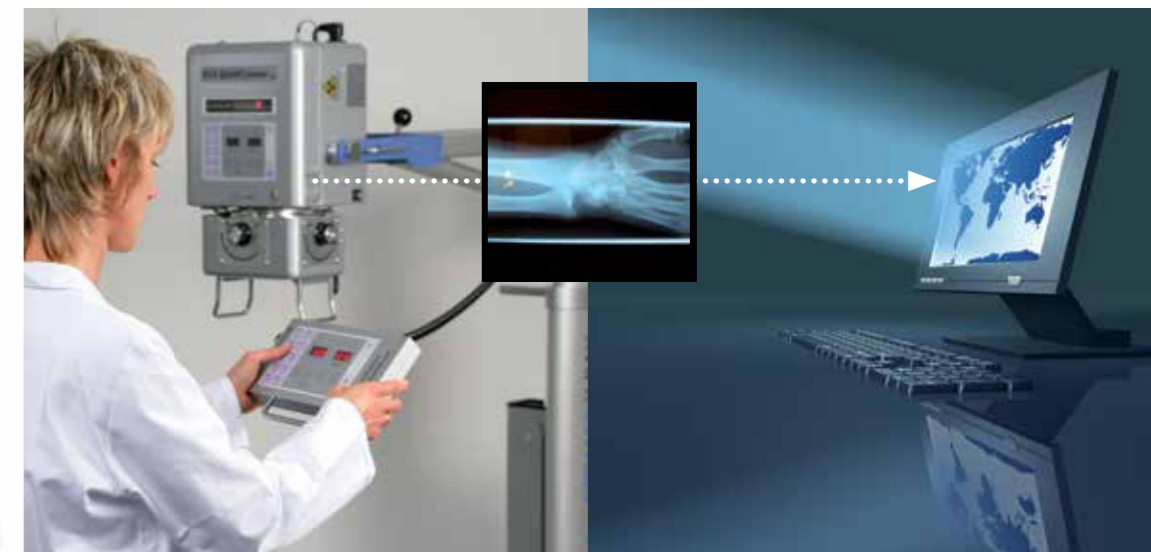
1

ATX DR Mobile Case SCOPE-XS open

ATX DR Mobile Case SCOPE-XL open

Transport box with ATX QUANTpower

2







## TECHNICAL DATA – ATX QUANTpower 400

	NOMINAL RATING
OPERATING VOLTAGE	AC, One-phase alternating current 200 – 260 V; 50/60Hz
MAINS FUSE	16 A @ 230 V
PROTECTION RATING	Type B, Class I
ELEKTROMAGNETIC COMPATIBILITY	(EMC) According to IEC 60601-1-2, 2002
MODE OF OPERATION	Continuous rating, intermittant charge
PULSE DUTY FACTOR	1 : 60 (ON 1 sec, OFF 60 sec)
WATER PERMEABILITY	Splashproof (according to IEC specification 529)
SECURITY ADVICE	Must not be operated in the vicinity of easily inflammable anesthetics, oxygen or nitrogen oxides
FUSE	30 A @ 230 V

### X-RAY UNIT

CONSTRUCTION	Single block device with high frequency technology – Full bridge inverter system
OUTPUT RATING	6 kVA at 100 kV
OUTPUT IN 2 kV-STEPS	40 – 50 kV = 100 mA (max.) 52 – 60 kV = 80 mA (max.) 62 – 80 kV = 70 mA (max.) 82 – 100 kV = 60 mA (max.) 102 – 120 kV = 50 mA (max.)
mAs	0,4 – 143 mAs
FOCAL SPOT	1.2 x 1.2 mm
TIMING	0.01 – 2.00 sec
X-RAY TUBE	XD4-120
TOTAL FILTER FACTOR	3.2 mm Al equiv. (with collimator)
VOLTAGE ADAPTION	Automatic
OVERLOAD PROTECTION	For high voltage transformer and X-ray tube
COLLIMATING LENS	Rotatable, 100 Lux at FFA 100 cm
DAP-EQUIPMENT	Ionization chamber, display integrated into control panel

### DIMENSIONS

BASE DIMENSIONS	L 970 mm x W 700 mm x H 1345 mm
RANGE	Max. height of focal point: 1970 mm Min. height of focal point: 420 mm Max. horizontal range: 1000 mm
TOTAL WEIGHT	75 kg incl. cassette case, remote control and extension cable



Technical specifications are subject to change!



## THE EASE OF MOBILE X-RAY TECHNOLOGY

### TECHNICAL DATA ATX QUANTpower 400 DR "All in one portable DR-System"

#### COMPACT

Archive  
DicomPACS-System  
Touchscreen-Panel-PC  
Docking Station  
Canon CXDI 55 G incl. Power Box  
and Software  
Remote control

#### LIGHT

Total weight: 86 kg

#### MOBILE

Perfect working conditions in the clinic  
Absolutely easy transport in any  
car (Jeep or VAN )  
Exceptional outdoor-area performance

#### POWER

Mono - Block High frequency technique  
Full bridge inverter system  
6 kW Power (120 kV)  
Focus 1.2 x 1.2 mm

Memory system  
Interface  
Dose area product meter

#### CERTIFICATION

German Medical Device Directive  
for regulatory purposes  
EN ISO 13485:2003/AC:2009  
Directive 93/42/EWG on Medical Devices  
NATO-Registration



I M P R I N T

**Editor:**  
KE-Meditec Consulting GmbH  
Oschatzer Straße 32  
D-01591 Riesa  
GERMANY

**X-ray products:**  
Atomed X-ray GmbH  
Am Südspeicher 4  
D-01587 Riesa  
GERMANY

**Design:**  
Kampagner I Werbeagentur  
Pfotenhauer Straße 73  
D-01307 Dresden  
www.kampagner.de

**Photo:**  
KE-Meditec Consulting GmbH, Atomed  
X-ray GmbH, Kampagner, Aramanda,  
Herbie, Philippe Bernard, Tammy  
Mobley, Thomas Franzky, Orlando  
Florin Rosu, carlosseller, fotolia, Marco  
Korac, Hallgerd, Jeffrey Collingwood



**KE-Meditec Consulting GmbH**



KE Meditec Consulting GmbH  
– your exclusive sales partner for States of GUS, V.A.E,  
Saudi Arabia, Turkey, Mongolia and Asian Country



**KE-Meditec Consulting GmbH**

**KE-Meditec Consulting GmbH**  
Oschatzer Straße 32, D-01591 Riesa  
GERMANY

**PHONE** +49 (0) 3 52 64 - 9 11 16  
**TELEFAX** +49 (0) 3 52 64 - 9 11 17  
[www.ke-meditec.com](http://www.ke-meditec.com)  
[info@ke-meditec.com](mailto:info@ke-meditec.com)